

# A donation today will feed a diner tomorrow.

We need your support to continue to nourish the bodies, hearts and minds of our most vulnerable neighbors, and to carry on the incredible 35 year legacy of the Sisters of St. Joseph of Carondelet.

## Naming and purchasing opportunities:

**Naming** (see diagram at bottom right):

1	Front Signage	\$5,000
2	Garden Entrance	\$7,500
3	Prep Kitchen	\$25,000
4	Dining Room	\$100,000
5	Have A Seat	\$500
6	Thursday Concert Series	\$10,000
7	Drink/Coffee Station	\$7,500
8	Serving Kitchen	\$50,000
9	Benches	\$3,250
10	Courtyard	<b>NAMED: Fox Foundation Courtyard</b>

**Items for purchase** (cost per item):

Flat Top with Refrigerator Chef Base	\$6,050
10 Burner 2 Oven Range	\$8,200
Double Fryer (2)	\$2,575
Soup Burner	\$1,300
Charbroiler	\$2,700
3-Bay Sink	\$1,950
Hand Sink	\$850
Dish Machine	\$9,450
Low Boy (2)	\$5,700
Convection Ovens (Pair)	\$12,400
Speed Rack (10)	\$850
Conveyor Oven	\$4,900
Vegetable Steamer	\$12,900
Outdoor Commercial 10ft Bench (4)	\$3,250
Seats (50)	\$500

## Support meals for a day, a week, a month:

This includes covering the cost of food, and salaries for Chef James and our professional culinary staff.

\$100 helps fund staples (coffee, milk and sugar).

\$150 helps fund paper goods and takeout containers.

\$250 helps fund a healthy assortment of fresh fruits and vegetables.

\$1,820 supports meals for all diners for one day.

\$9,100 supports meals for all diners for one week.

\$36,400 supports meals for all diners for one month.

**See other side for ways to donate.**

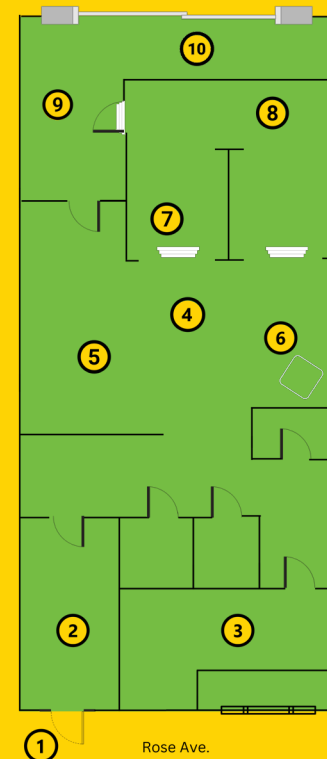


People fall on hard times. You come away realizing they are us. Bread and Roses is here to help get them on their feet in a calm, dignified way. As a 20+ year volunteer, it's so clear to me that I'm where I'm supposed to be and that this is supposed to be what I'm doing.



KEVIN MCCARDLE  
DONOR, CHAIRMAN EMERITUS,  
ST. JOSEPH CENTER BOARD  
OF DIRECTORS, AND VOLUNTEER  
SINCE 2002

## NAMING OPPORTUNITIES



## Ways to donate

Due to surging food prices and the rising cost of living, Bread and Roses Café faces an increased need for contributions to serve hundreds of meals daily to Angelenos experiencing homelessness.

Your support means the world – and nourishment, and a full heart – to Bread and Roses Café diners.

### Two ways to donate:

#### Online:

<https://stjosephctr.org/breadroses35thanniversarycelebration/>



#### Send a check to:

Bread and Roses Café  
St. Joseph Center  
204 Hampton Drive  
Venice, CA 90291

#### For naming opportunities or questions,

contact Sharyn Church, Chief Development Officer  
[schurch@stjosephctr.org](mailto:schurch@stjosephctr.org) or 310-396-6468, x 347



St. Joseph Center  
204 Hampton Drive  
Venice, CA 90291  
[www.stjosephctr.org](http://www.stjosephctr.org)  
310-396-6468

**There is no life  
without food.  
There is no dignity  
without respect.**

